

LELO

ENIGMA™ Cruise



USER MANUAL

**MYSTERIOUSLY GOOD
DUAL-ACTION PLEASURE AWAITS.**

ENJOY IT OFTEN, WISELY AND WITH CARE.

Congratulations on acquiring ENIGMA™ Cruise. Before getting more closely acquainted with it, please take a moment to look through this user manual.

IMPORTANT: Your pleasure object has been locked for transportation. To unlock, simply connect the charger or see below.

SAFETY

This product should only be used by people aged 18 years and over. Persons with reduced physical, sensory, or mental capabilities, or lack of experience and knowledge of the device should only use the product if they have been given supervision or instruction concerning the use of the product in a safe way and understand the hazards involved. Minors shall not play with the product. Minors should not clean and/or use the product unsupervised.

COMPLIANCE STATEMENT

a. Please take note that changes or modifications not expressly approved by the party responsible for compliance could void the user's authority to operate the equipment.

This device complies with Part 15 of the FCC Rules. Operation is subject to the following two conditions:

- (1) This device may not cause harmful interference, and
- (2) This device must accept any interference received, including interference that may cause undesired operation.

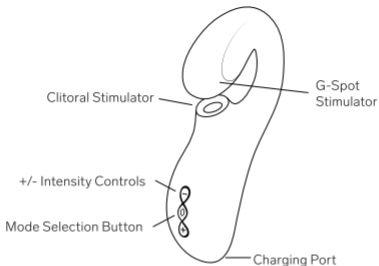
b. This device complies with Industry Canada license-exempt RSS standard(s). Operation is subject to the following two conditions:

- (1) This device may not cause interference, and
- (2) This device must accept any interference, including interference that may cause undesired operation of the device.

GETTING STARTED

- Before first use, charge your ENIGMA™ Cruise for up to 2 hours.
- Make sure ENIGMA™ Cruise is unlocked by pressing and holding the + and – buttons together for 3 seconds until the light turns on.
- Apply LELO Personal Moisturizer on the product and your body for enhanced pleasure.
- Press + button to turn on; press again to increase the vibration strength.
- Press (i) button to switch between the 8 vibration patterns.
- Press – button to reduce vibration strength.
- Press and hold (i) button to turn off.

GETTING TO KNOW YOUR ENIGMA™ Cruise



CRUISE CONTROL (For ENIGMA™ Cruise only)

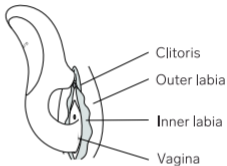
Cruise Control is a fully automatic function, not a setting that requires you to turn it on or off. Cruise Control is designed to detect any slowing motion of the motor and can boost the motor up again via PWM (Pulse Wave Modulation). In doing so, Cruise Control ensures that you enjoy consistent power and intensity, even while ENIGMA™ Cruise is pressed firmly against your body.

USING ENIGMA™ CRUISE

- How to hold



- Where to place on the body

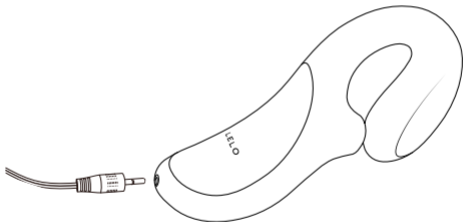


Tip: For an even more pleasurable sensation, apply a liberal amount of LELO Personal Moisturizer to your body and to ENIGMA™ Cruise before and during use.



CHARGING YOUR ENIGMA™ Cruise

- Insert the DC plug into the DC port at the base of your ENIGMA™ Cruise.
- Insert the main plug into a USB port. The LED on the interface of your ENIGMA™ Cruise will pulse to indicate it is charging. When it is fully charged, the LED will emit a steady glow.
- When the battery is running low, the LED on your ENIGMA™ Cruise will emit a blinking white light.



Only use original chargers provided by LELO with your ENIGMA™ Cruise.

CLEANING, STORAGE, AND SAFETY

- Using ENIGMA™ Cruise with hand creams or silicone-based lubricants may make the silicone permanently tacky.
- ENIGMA™ Cruise is fully waterproof, making cleaning simple. Rinse and spray with LELO Toy Cleaner, then rinse again and allow to dry.
- Always clean your ENIGMA™ Cruise thoroughly before and after each use. You can wash the silicone with warm water and antibacterial soap, rinse with clean hot water and pat dry with a lint-free cloth or towel. Never use cleansers containing alcohol, petrol or acetone.
- Avoid leaving your ENIGMA™ Cruise in direct sunlight and NEVER expose it to extreme heat. Store your ENIGMA™ Cruise in a dust-free place and keep it away from products of other materials.
- For extra care, gently wipe the inside of the pleasure point with a cotton swab.

The appliances must only be supplied at SELV.

TROUBLESHOOTING

The LED on your ENIGMA™ Cruise does not pulse when the charger is connected:

- The battery is drained and will require several minutes to acknowledge that it is being charged.
- The charger is not properly connected. Check wall and DC sockets.

Your ENIGMA™ Cruise does not activate when the center button is pressed:

- The battery is empty. Recharge your ENIGMA™ Cruise.
- The interface of your ENIGMA™ Cruise is locked. Hold down + and – for 5 seconds.

If you experience any other problems with your ENIGMA™ Cruise or if you have any questions regarding operation, please contact: [**customercare@lelo.com**](mailto:customercare@lelo.com)

SPECIFICATIONS

MATERIALS	Body-Safe Silicone, ABS
BODY COLORS	Deep Rose, Black
INTERFACE	3-button interface
SWITCH OFF	Automatic after 60 minutes
FREQUENCY	60 Hz / 100 Hz
BATTERY	Li-Ion 850mAh 3.7V
USER TIME	Up to 2 hours
STANDBY TIME	Up to 90 days
SIZE	100 x 50 x 185 mm / 3.9 x 1.9 x 7.3 in
INSERTABLE LENGTH	140 mm / 5.5 in
WEIGHT (ONLY PRODUCT)	196 g / 0.43 lb

REGISTER WARRANTY

To activate your 1-Year Limited Warranty, register the number provided on the LELO Authenticity Card at LELO.COM/SUPPORT.

1-YEAR WARRANTY

LELO warrants this pleasure object for a period of ONE (1) YEAR, after the date of original purchase, against defects due to faulty workmanship or materials. The warranty covers working parts that affect the function of the pleasure object. It does NOT cover cosmetic deterioration caused by fair wear and tear or damage caused by accident, misuse or neglect. Any attempt to open or take apart the pleasure object (or its accessories) will void the warranty. If you discover a defect and notify LELO during the warranty period, LELO will, at its discretion, replace the pleasure object free of charge. Claims under warranty must be supported by reasonable evidence of the date of claim is within the warranty period. To validate your warranty, please keep your original purchase receipt together with these warranty conditions for the duration of the warranty period. To claim your warranty, you must log in to your account at LELO.COM then select the option to make a warranty claim. Shipping costs are non-refundable. This undertaking is in addition to consumer's statutory rights and does not affect those rights in any way.

DISPOSAL INFORMATION

Disposal of old electronic equipment (applicable in the EU and other European countries with separate waste collection systems):

The crossed-out dustbin symbol indicates that this pleasure object should not be treated as household waste, but rather be brought to the appropriate collection point for recycling of electrical and electronic equipment.



DISCLAIMER: Users of this product do so at their own risk. Neither LELO nor its retailers assume any responsibility or liability for the use of this product. Changes or modifications not expressly approved by the manufacturer could void the user's authority to operate the equipment.

Model may be changed for improvements without notice.

© 2022 LELOi AB. All rights reserved.

LELOi AB, Karlavägen 41, 114 31 Stockholm, Sweden.

Distributed in the US by: LELO Inc., 5799 Fontanos Way, San Jose, CA 95138, USA.

Distributed in Australia by LELO Oceania 6 Prohasky Street, Port Melbourne, VIC 3207, Australia.

Designed and developed by LELO Sweden.

Made in China.

US and International patents or patent applications apply to this product:

visit www.lelo.com/ip

www.lelo.com